

AVAILABLE EQUIPMENT AND ATTACHMENTS

- ✔ Truf/sand tires (31 x 15.50 - 15)
- ✔ Hard surface tires (31 x 10 x 16.5)
- ✔ No flat trak-seal tires
- ✔ Amber strobe light
- ✔ Flood lights
- ✔ Smart backup alarm
- ✔ Load backrest
- ✔ Suspension seat
- ✔ Tapered, pallet, or block forks
- ✔ 72", 96", 120" or 144" masts
- ✔ Engine block heater
- ✔ Wide load stabilizers
- ✔ Auxiliary hydraulics for attachment

BUILT SPECIFICALLY FOR ROUGH TERRAIN WORK

Consider these key features of Noble's TM-Series lift truck:

- ✔ Proven, reliable Perkins diesel engine
- ✔ Mount and dismount TM50 in less than 60 seconds
- ✔ ProEngineer software used to design optimum strength one piece frame
- ✔ Sideshifting masts
- ✔ Center seat for optimum visibility
- ✔ Mast heights of 6', 8', 10' and 12'
- ✔ Power rotary actuator steering
- ✔ O-ring faced seals used at virtually all hydraulic connections
- ✔ Superior stability during load retrieval and placement.
- ✔ Frame to Frame mounting system
- ✔ Three wheel hydrostatic drives
- ✔ Meets current ANSI B56.6b safety standards for Rough Terrain Forklift Trucks

Extensive Dealer Support

Our dealer network covers all of North America with hundreds of dealer locations that have thousands of trained service techs ready to provide you with superior service and support. It's all part of the Factory and dealer commitment to help you achieve maximum productivity. Innovative engineering, design excellence and manufacturing quality have been the hallmarks of Noble Lift Trucks.

Safety Standards

The Trailer Mate meets ANSI B56.6 Safety Standards. Users should be aware of, and adhere to, applicable codes and regulations regarding operator training, use, operation and maintenance of powered industrial trucks, including ANSI B56.6, NFPA 505, Fire Safety Standard for Powered Industrial Trucks and OSHA regulations which may apply. Contact your Noble Lift Truck Dealer for information.

Financial Services

There are a variety of financing and leasing options with terms, cash requirements and tax benefits to suit the individual needs of your business.

Your Next Step

See for yourself the benefits of owning or leasing Noble lift trucks. Call your Noble lift truck dealer for a demonstration and a quote.



TRAILER MATE™

TRUCK MOUNTED FORKLIFT

- ✔ Built Specially for Rough Terrain
- ✔ Powered by reliable Perkins Diesel Engine
- ✔ Standard Three Wheel Hydrostatic Drives
- ✔ Pantograph Reach Mechanism
- ✔ Mount or Dismount TM in Less than 60 Seconds
- ✔ Frame to Frame Mount
- ✔ Responsive Hydraulics
- ✔ Superior Load Placement Stability
- ✔ Self-Lubricating Slider Block on Mast and Pantograph
- ✔ Class II Hook Carriage
- ✔ Equipment Options
- ✔ Easy to Maintain
- ✔ Easy to Transport
- ✔ Easy to Operate
- ✔ Extensive Dealer Support
- ✔ Dealer Financing
- ✔ Commitment to Quality



R Series forklifts are built specifically for rough terrain work and designed to meet your needs



Innovative engineering, design excellence, and manufacturing quality comes with the RT-Series.



TM Series trucks are Designed Using the Latest Engineering Technology ProEngineering.



Veri-Tek International, Corp., 7402 West 100th Place, Bridgeview, IL 60455
Phone: 708 237 2080 • Fax 708 430 1335 • Web Site: www.veri-tek.com





ELECTRONIC ENGINE MANAGEMENT SYSTEM

Monitors engine coolant temperature and engine oil pressure, shuts the engine down before reaching potentially damaging levels.

CENTER SEATING

Allows operator to be seated directly behind the center of the mast. Provides the operator with clear visibility to right and left of the load or trailer. Reduces product and machine damage.

SELF-LUBRICATING SLIDER BLOCKS ON MAST AND PANTOGRAPH

Spreads contact load over large area and reduces maintenance compared to rolled mast.

CUSHION VALVE IN PANTOGRAPH CYLINDER

Prevents carriage from retracting too quickly when pantograph nears fully retracted position.

FRAME-TO-FRAME MOUNTING SYSTEM

The frame of the truck or the trailer and the chassis of the TrailerMate combined to support the weight of the TM50 during transport. No hydraulics or tires are used to support the TM50 during transport. Vibration is reduced to a minimum on key component parts.

QUICK AND EASY MOUNTING

In less than 60 seconds the TrailerMate is ready to go to work or to be transported.

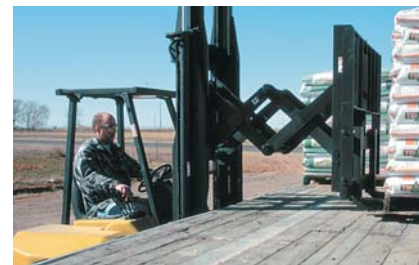


PROENGINEERED CELLULAR FRAME CONSTRUCTION

Allows the maximum load to be lifted, carried and extended without overstressing any area of the frame.

PANTOGRAPH-REACH MECHANISM

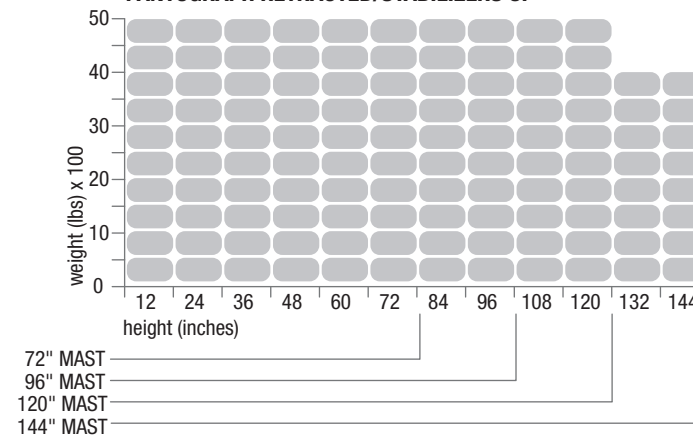
Keeps the horizontal center of gravity within the stability triangle of the TM50 by moving only the carriage and the load. The Pantograph eliminates moving the additional weight of the mast within the stability triangle. Drive the TrailerMate and feel the stability while picking up and depositing loads in rough terrain conditions.



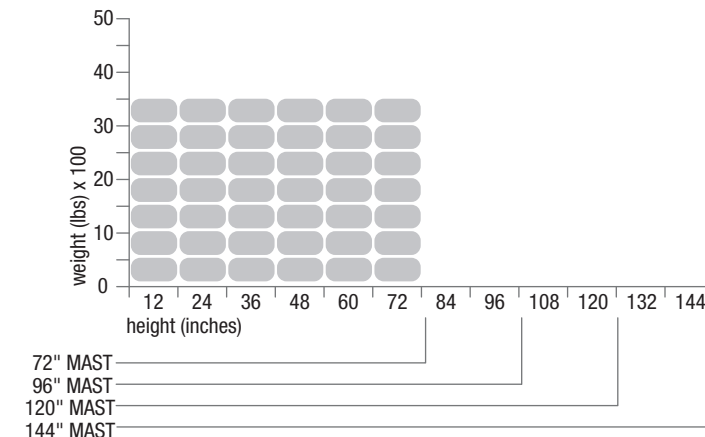
ANSI B56.6 three wheel drive	US(STANDARD)				METRIC					
TIRES	31 x15.5 INCHES				31x15.5 INCHES					
MAST (MFH)	72	96	120	144	INCHES	1829	2438	3048	3658	MM
OVERALL HEIGHT LOWERED	91	103	115	127	INCHES	2311	2616	2921	3226	MM
CAPACITY (@ 24" LC)	5000	5000	5000	4000	LBS	2268	2268	2268	1814	KG
POWER - Perkins 404C-22 Water Cooled DIESEL)	50 HP @ 2800 RPM					35.3 KW @ 2800 RPM				
WEIGHT	5450	5640	5780	6140	LBS	2474	2561	2625	2788	KG
GHAIABILITY @ 2 MPH	53	52	51	49	PERCENT	53	52	51	49	PERCENT
OVERALL GUARD HEIGHT				92	INCHES				2337	MM
TILT (±1) FORWARD/BACK				5 / 9					5 / 9	
SIDESHIFT TOTAL S/S				6	INCHES				152	MM
GROUND CLEARANCE				8.75	INCHES				222	MM
FRAME OPENING				60	INCHES				1524	MM
OVERALL WIDTH				100	INCHES				2540	MM
OVERHANG				65	INCHES				1S51	MM
OVERALL LENGTH				107.5	INCHES				2731	MM
EXTENSION PANTOGRAPH	48	48	48	45	INCHES	1219	1219	1219	1143	MM
TURNING RADIUS				93	INCHES				2360	MM
TRAVEL SPEED (FORWARD/BACKWARD)				9.0/5.9	MPH				14.5/9.5	KM/H

LIFT CAPACITIES AT VARIOUS HEIGHTS AND REACHES

PANTOGRAPH RETRACTED/STABILIZERS UP



PANTOGRAPH EXTENDED/STABILIZERS UP



PANTOGRAPH EXTENDED/STABILIZERS DOWN

